

ersa

WORK

Malzemeler & Kumaşlar

Materials & Fabrics

İÇİNDEKİLER / INDEX

Malzemeler / Materials

LAMİNAT / LAMINATE

MELAMİN / MELAMINE

KAPLAMA / VENER

LAKE / LACQUER

METAL EPOKSİ / METAL EPOXY

CAM / GLASS

AKRİLİK / ACRYLIC

KOMPAKT LAMİNAT / COMPACT LAMINATE

MERMER / MARBLE

SINTERFLEX / SINTERFLEX

HPM / HPM

Kumaşlar / Fabrics

KENYA / A

BONDAI / A

FIJI/A

ARTIFICIAL LEATHER / B

LONDON/ B

ALPİNA / B

SEATTLE / B

KING FLEX / C

SONUS / C

NEOWOOL / D

SEALIFE / E

LINEA / F

OPERA / PAD

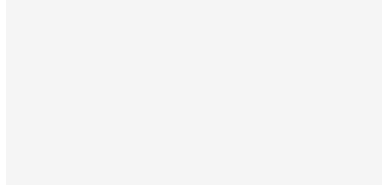
SERGE FERRARI / OUTDOOR

PLAIN MELANGE / OUTDOOR

LAMİNAT / LAMINATE

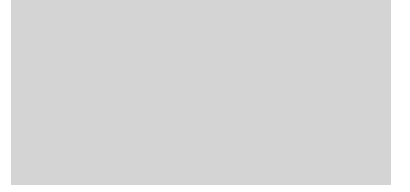
Beyaz
White

L1019



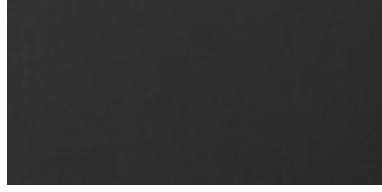
Gri
Grey

L1017



Laminat
Antrasit
Laminate
Anthracite

L1002



Beyaz
Amerikan Meşe
American
White Oak

L1020



Freze Amerikan
Ceviz
Freze American
Walnut

L1021



Dumanlı
Okalıptus
Smoked
Eucalyptus

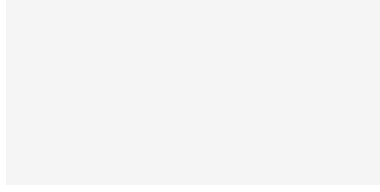
L4213



MELAMİN / MELAMINE

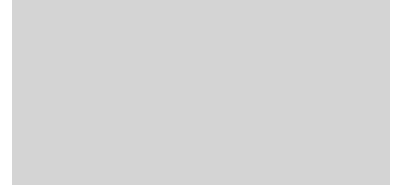
Beyaz
White

M1019



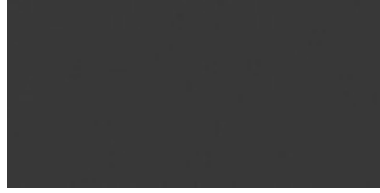
Gri
Grey

M1017



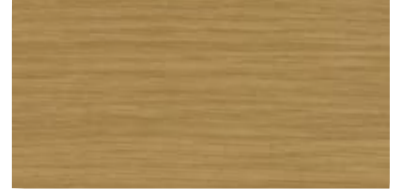
Antrasit
Anthracite

M1002



Freze Amerikan
Beyaz Meşe
Freze American
White Oak

M1020



Freze Amerikan
Ceviz
Freze American
Walnut

M1021



Dumanlı
Okalıptus
Smoked
Eucalyptus

M4213



Siyah
Black
M1025



KAPLAMA / VENEER

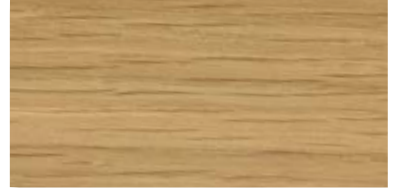
Freze Amerikan
Ceviz
American Rift
Cut Walnut

K1011



Freze Amerikan
Meşe
American Rift
Cut Oak

K1012



Siyah
Anilin
Black
Aniline

K1015



Dumanlı
Okalıptus
Smoked
Eucalyptus

K1013



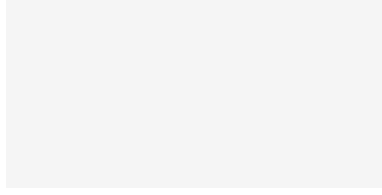
Smoked Meşe
Kaplama
Smoked Oak
Veneer

K1014

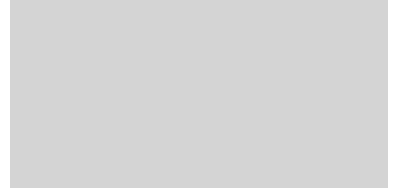


LAKE / LACQUER

Beyaz
White
LC9016



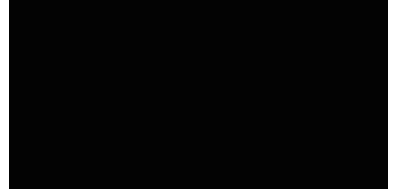
Gri
Grey
LC7662



Antrasit
Anthracite
LC7024



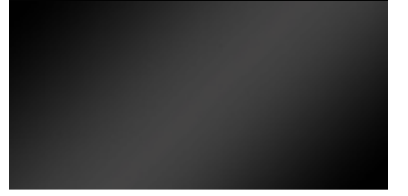
Siyah
Black
LC9005



Sahra Bej
Sahara Beige
LCOL07



Parlak Siyah
Bright Black
LP9005



Hardal
Mustard
LC1011



Açık Yeşil
Light Green
LC7033



Vizon
Mink
LC1019



Kum Gri
Sand Grey
LCB155

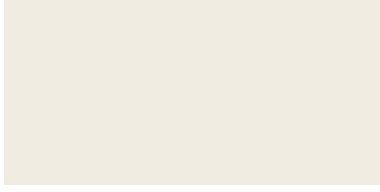


Kiremit
Tile Red
LC8004



METAL EPOKSİ / METAL EPOXY

Beyaz
White
MT9010



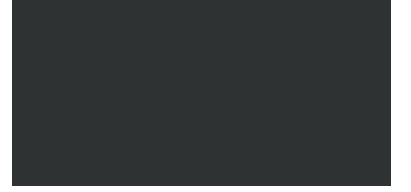
Metalik Gri
Metallic Grey
MT7662



Antrasit
Anthracite
MT7024



Siyah
Black
MT9005



Lacivert
Dark Blue
MT5838



Hardal
Mustard
MT1011



Koyu Yeşil
Dark Green
MT6012



Açık Yeşil
Light Green
MT7033



Kiremit
Tile Red
MT8004



Metalik Siyah
Metallic Black
MT9672



Vizon
Mink
MT1019



CAM / GLASS

Beyaz
White

CB9016



Siyah
Black

CS9005



Asitli
Acid Etching

CASİT



Bronz
Bronze

GBRONZ



AKRİLİK / ACRYLIC

Transparan Beyaz
Transparent White

AK6230



Turuncu
Orange

AK5120



Füme
Smoked

AK7120



KOMPAKT LAMİNAT / COMPACT LAMINATE

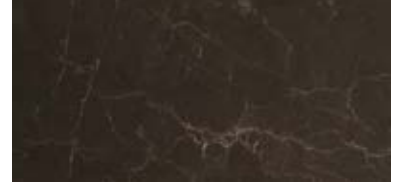
Beyaz Mermer
White Marble

CL5657



Kahverengi Mermer
Brown Marble

CL5658



MERMER / MARBLE

Crema Fatin

MPCRM



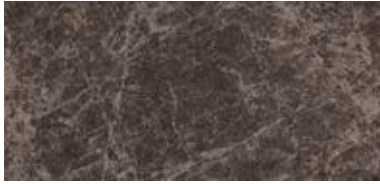
Verdi Marina

MPVRD



Emperador Dark

MPEMP



Nero Marquina

MPNRO



SINTERFLEX/ SINTERFLEX

Marmo Metallo

SMMTL



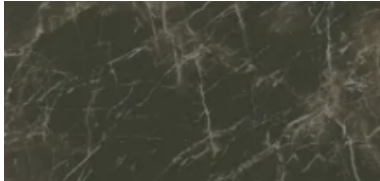
Palissandro

SPLSN



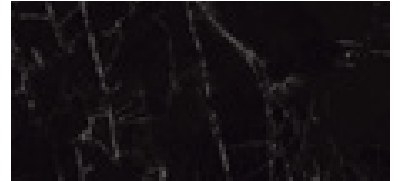
Mocha Perla

SMPRL



Marble Dark

SMDRK

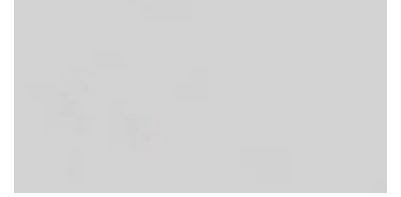


HPM/ HPM

Gri
Grey
HPM921



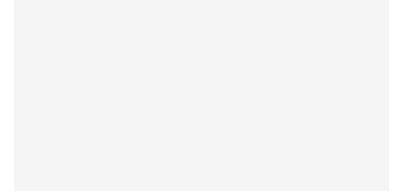
Mat Saten Gri
Dull Satin Grey
HPM503



Okaliptus
Eucalyptus
HPM939



Beyaz
White
HPM363



Dumanlı Meşe
Smoke Oak
HPM904



Beyaz Amerikan
Meşe
White American
Oak
HPM113



KENYA / A

Truffle



Chocolate



Yellow



Orange



Red



Lion



Forest



Blue



Cement



Anthracite



KENYA / A

TEKNİK DETAYLAR / TECHNICAL SHEET

TR

Kumaş Yapısı	%100 Polyester
Genişlik	140 cm (+/-%3)
Metre Başı Ağırlığı	434 g/m ² ±%5
Yanmaya Karşı Dayanıklılık	BS 5852 Bölüm 1 (Sigara) EN 1021-1 (Sigara) CA Tech. Bull. 117.2013/NFPA 260 (Sigara)
Solmaya Karşı Dayanıklılık	4 (ISO 105 - B02)
Aşınmaya Karşı Dayanıklılık	>100.000 EN ISO 12947 - 1,2

EN

Composition	100% Polyester
Width	140 cm (+/-%3)
Weight per Meter	434 g/m ² ±%5
Fire Test	BS 5852 Part 1 (Cigarette) EN 1021-1 (Cigarette) CA Tech. Bull. 117.2013/NFPA 260 (Cigarette)
Lightfastness	4 (ISO 105 - B02)
Abrasion	>100.000 EN ISO 12947 - 1,2

BONDAI / A

4011



3005



1008



1005



6003



6098



7021



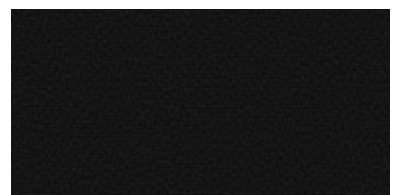
8078



8010



8033



BONDAI / A

TEKNİK DETAYLAR / TECHNICAL SHEET

TR

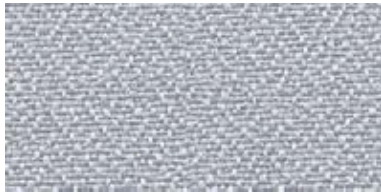
Kumaş Yapısı	%100 Polyester
Genişlik	140 cm
Metre Başı Ağırlığı	350g/ml 250 g/m ²
Yanmaya Karşı Dayanıklılık	1 IM 9175 BS 7176 California TB 117 CRIB 5 (BS 5852 Bölüm II) EN 1021-1&2 Euroclass EN 13501-1 6 (ISO 105 - B02)
Solmaya Karşı Dayanıklılık	150.000
Aşınmaya Karşı Dayanıklılık	

EN

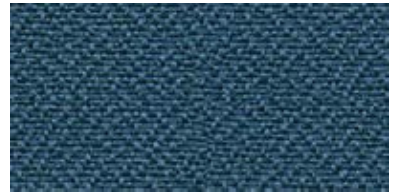
Composition	100% Polyester
Width	140 cm
Weight per Meter	350g/ml 250 g/m ²
Fire Test	1 IM 9175 BS 7176 California TB 117 CRIB 5 (BS 5852 Part II) EN 1021-1&2 Euroclass EN 13501-1 6 (ISO 105 - B02)
Lightfastness	150.000
Abrasion	

FIJI / A

Puffer
YA303



Gourami
YA306



Arowan
YA308



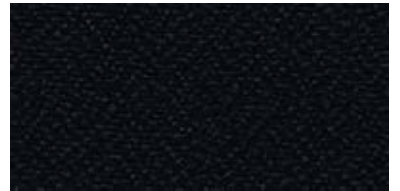
Piranha
YA315



Catfish
YA300



Black Molly
YA319



FIJI / A

TEKNİK DETAYLAR / TECHNICAL SHEET

TR

Kumaş Yapısı	%100 Polyester Metal içermeyen boyarmadde
Genişlik	Minimum 170 cm
Metre Başı Ağırlığı	260 g/m ² ±%5
Yanmaya Karşı Dayanıklılık	EN 1021 - 1 (sigara) EN 1021 - 2 (kibrit) BS 7176 Düşük Risk BS 476 Kısım 7 Sınıf 1 EN 13501-1 Yapıştırılmış Sınıf B, s1, d0 EN 13501-1 Yapıştırılmamış Sınıf B, s1, d2
Solmaya Karşı Dayanıklılık	6 (ISO 105 - B02)
Aşınmaya Karşı Dayanıklılık	10 yıl garantili

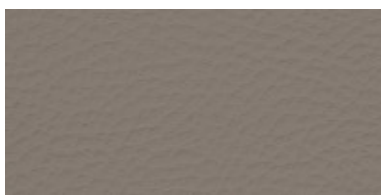
EN

Composition	100% Polyester Non metallic dyestuffs
Width	170 cm minimum
Weight per Meter	260 g/m ² ±5%
Fire Test	EN 1021 - 1 (cigarette) EN 1021 - 2 (match) BS 7176 Low Hazard BS 476 Part 7 Class 1 EN 13501-1 Adhered Class B, s1, d0 EN 13501-1 Un-adhered Class B, s1, d2
Lightfastness	6 (ISO 105 - B02)
Abrasion	10 years guarantee

ARTIFICIAL LEATHER / B

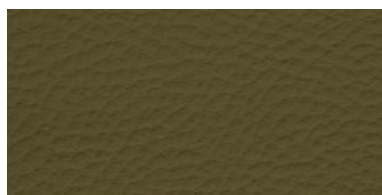
Beige

035



Khaki

440



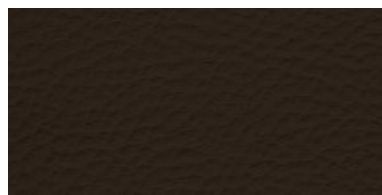
Tan

305



Brown

366



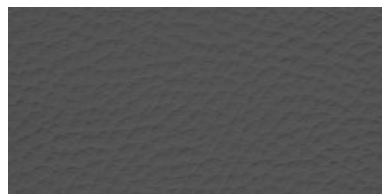
Claret

220



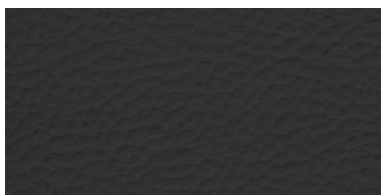
Light Grey

605



Dark Grey

620



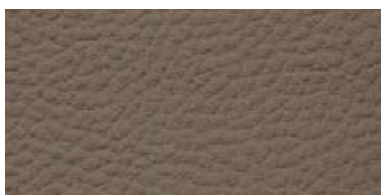
Black

901



Cappucino

060



Navy Blue

520



ARTIFICIAL LEATHER / B

TEKNİK DETAYLAR / TECHNICAL SHEET

TR

Kumaş Yapısı	%3 PU, %88 PVC, % 14 POLYESTER
Genişlik	1,40 cm
Metre Başı Ağırlığı	900 g/m ² ±5% (EN ISO 2286-2)
Yanmaya Karşı Dayanıklılık	BS 5852 PART 2 CRİB 5 EN ISO 1021 PART 1/2 BS 5852 PART 0/1
Solmaya Karşı Dayanıklılık	ISO 105-A03:1993
Aşınmaya Karşı Dayanıklılık	100.000

EN

Composition	%3 PU, %88 PVC, % 14 POLYESTER
Width	1,40 cm
Weight per Meter	900 g/m ² ±5% (EN ISO 2286-2)
Fire Test	BS 5852 PART 2 CRİB 5 EN ISO 1021 PART 1/2 BS 5852 PART 0/1
Lightfastness	ISO 105-A03:1993
Abrasion	100.000

LONDON / B

Brown



Trufa



Bordeaux



Orange



Citric



Ocean



Turquoise



Light Grey



Dark Grey



Black



Green



LONDON / B

TEKNİK DETAYLAR / TECHNICAL SHEET

TR

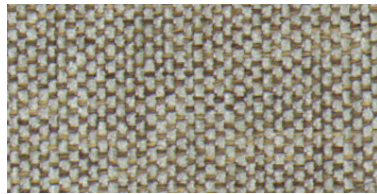
Kumaş Yapısı	%100 Polyester
Genişlik	142 cm (+/-%3)
Metre Başı Ağırlığı	596 g/m ² ±%5
Yanmaya Karşı Dayanıklılık	BS 5852 Bölüm 1 (Sigara) EN 1021-1 (Sigara) CA Tech. Bull. 117.2013/NFPA 260 (Sigara)
Solmaya Karşı Dayanıklılık	>5 (ISO 105 - B02)
Aşınmaya Karşı Dayanıklılık	80.000

EN

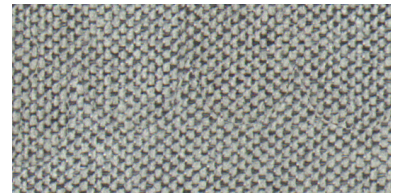
Composition	100% Polyester
Width	142 cm (+/-%3)
Weight per Meter	596 g/m ² ±%5
Fire Test	BS 5852 Part 1 (Cigarette) EN 1021-1 (Cigarette) CA Tech. Bull. 117.2013/NFPA 260 (Cigarette)
Lightfastness	>5 (ISO 105 - B02)
Abrasion	80.000

ALPINA/ B

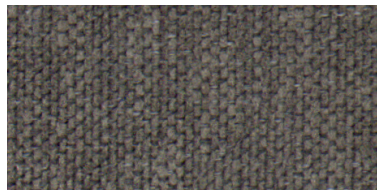
611



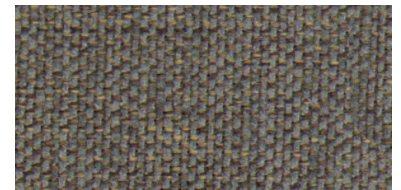
612



615



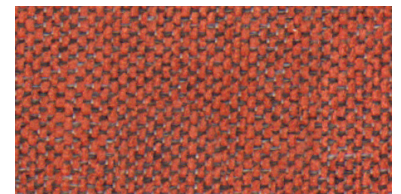
616



619



623



646



650



651



ALPINA/ B

TEKNİK DETAYLAR / TECHNICAL SHEET

TR

Kumaş Yapısı	%100 PES
Genişlik	140 cm
Metre Başı Ağırlığı	370 g/m ² ±%5
Yanmaya Karşı Dayanıklılık	-
Solmaya Karşı Dayanıklılık	7 (ISO 105 - B02)
Aşınmaya Karşı Dayanıklılık	74,000

EN

Composition	%100 PES
Width	140 cm
Weight per Meter	370 g/m ² ±%5
Fire Test	-
Lightfastness	7 (ISO 105 - B02)
Abrasion	74,000

SEATTLE / B

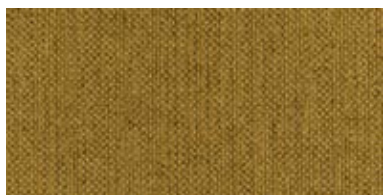
Toffee



Red



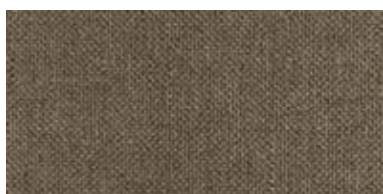
Yellow



Camel



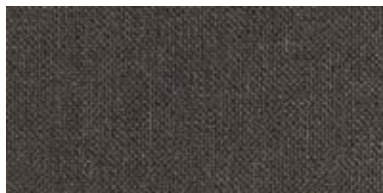
Trufa



Moka



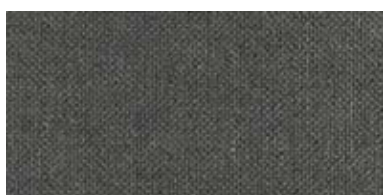
Elephant



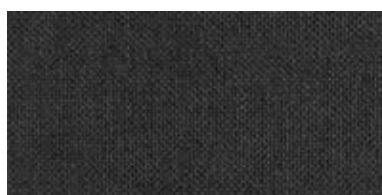
Ocean



Ash



Anthracite



Green



SEATTLE / B

TEKNİK DETAYLAR / TECHNICAL SHEET

TR

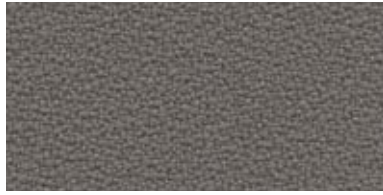
Kumaş Yapısı	%100 Polyester
Genişlik	142 cm (+/-%3)
Metre Başı Ağırlığı	653 g/m ² ±%5
Yanmaya Karşı Dayanıklılık	BS 5852 Bölüm 1 (Sigara) EN 1021-1 (Sigara) CA Tech. Bull. 117.2013/NFPA 260 (Sigara)
Solmaya Karşı Dayanıklılık	5 (ISO 105 - B02)
Aşınmaya Karşı Dayanıklılık	90.000

EN

Composition	100% Polyester
Width	142 cm (+/-%3)
Weight per	653 g/m ² ±%5
Meter Fire Test	BS 5852 Part 1 (Cigarette) EN 1021-1 (Cigarette) CA Tech. Bull. 117.2013/NFPA 260 (Cigarette)
Lightfastness	5 (ISO 105 - B02)
Abrasion	90.000

KING FLEX / C

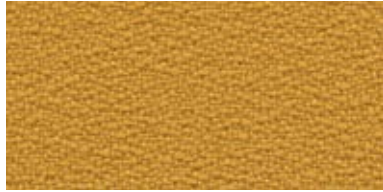
2005



1006



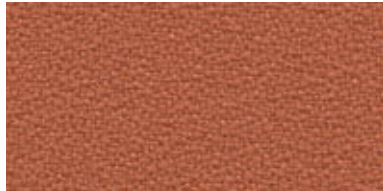
3083



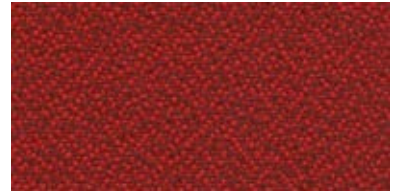
2023



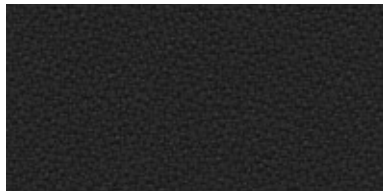
2003



9244



8033



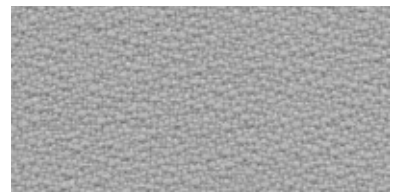
8010



8007

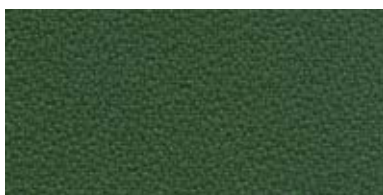


8027



KING FLEX / C

7020



7015



6098



9268



6026



KING FLEX / C

TEKNİK DETAYLAR / TECHNICAL SHEET

TR

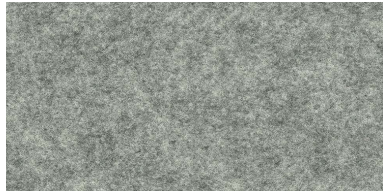
Kumaş Yapısı	%100 Polyester Trevira CS
Genişlik	140 cm
Metre Başı Ağırlığı	420 g/ml - 300 g/m ²
Yanmaya Karşı Dayanıklılık	1 IM (UNI 9175) AM 18 (NF D 60013) B1 (DIN 4102) BS 7176 C1 (UNI 9174 -UNI 8456) California TB 117 CRIB 5 (BS 5852 Bölüm II) EN 1021-1&2 EN 13773 IMO Döşemeler için Bölüm 8 M1 (NF P 92501-7) ONORM B 3825 - Onorm A 3800-1 Sınıf B1 -Q1- TR1 USA NFPA 260 USA NFPA 701
Solmaya Karşı Dayanıklılık	6 (ISO 105 - B02)
Aşınmaya Karşı Dayanıklılık	100.000

EN

Composition	100% Polyester Trevira CS
Width	140 cm
Weight per Meter	420 g/ml - 300 g/m ²
Fire Test	1 IM (UNI 9175) AM 18 (NF D 60013) B1 (DIN 4102) BS 7176 C1 (UNI 9174 -UNI 8456) California TB 117 CRIB 5 (BS 5852 Part II) EN 1021-1&2 EN 13773 IMO for Upholstery Part 8 M1 (NF P 92501-7) ONORM B 3825 - Onorm A 3800-1 Class B1 -Q1- TR1 USA NFPA 260 USA NFPA 701
Lightfastness	6 (ISO 105 - B02)
Abrasion	100.000

SONUS / C

Beat
FHR03



Classical
FHU14



Vocal
FHU08



Chime
FHU10



SONUS / C

TEKNİK DETAYLAR / TECHNICAL SHEET

TR

Kumaş Yapısı	FHR: %72 Polyester, %18 Poliamid, %10 Viskon FHU: %57 Polyester, %43 Poliamid
Genişlik	170 cm minimum
Metre Başı Ağırlığı	200 g/m ² ±10%
Yanmaya Karşı Dayanıklılık	EN 1021 - 1 (sigara) EN 13501-1 Adhered Class B, s1, d0
Solmaya Karşı Dayanıklılık	Standard: 5 (ISO 105 - B02), FHR05: 4 (ISO 105 - B02)
Aşınmaya Karşı Dayanıklılık	-

EN

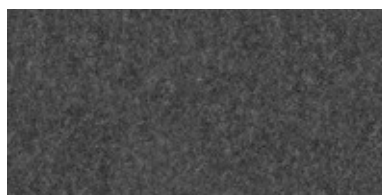
Composition	FHR: 72% Polyester, 18% Polyamide, 10% Viscose FHU: 57% Polyester, 43% Polyamide
Width	170 cm minimum
Weight per Meter	200 g/m ² ±10%
Fire Test	EN 1021 - 1 (cigarette) EN 13501-1 Adhered Class B, s1, d0
Lightfastness	Standard: 5 (ISO 105 - B02), FHR05: 4 (ISO 105 - B02)
Abrasion	-

NEOWOOL / D

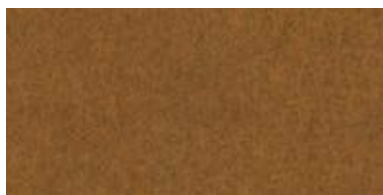
Silver



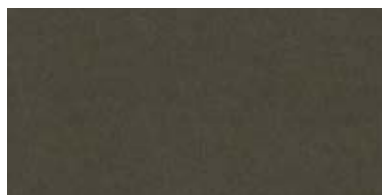
Anthracite



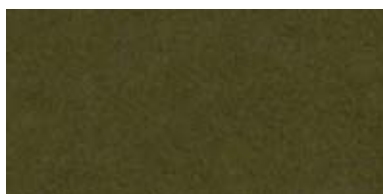
Maroc



Taupe



Green



Bordeaux



Yellow



Curry



NEOWOOL / D

TEKNİK DETAYLAR / TECHNICAL SHEET

TR

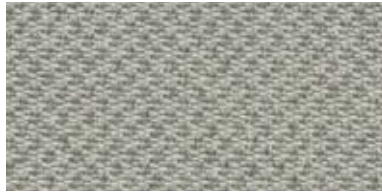
Kumaş Yapısı	%75 Yün, %25 Naylon/Polyamid
Genişlik	140 cm
Metre Başı Ağırlığı	620 g/ml
Yanmaya Karşı Dayanıklılık	BS 5852 - 1:1979-0 BS 5852 - 1:1979-1
Solmaya Karşı Dayanıklılık	4-5 (BS EN ISO 105 - D01:2020)
Aşınmaya Karşı Dayanıklılık	83.000

EN

Composition	75% Wool, 25% Nylon/Polyamid
Width	140 cm
Weight per Meter	620 g/ml
Fire Test	BS 5852 - 1:1979-0 BS 5852 - 1:1979-1
Lightfastness	4-5 (BS EN ISO 105 - D01:2020)
Abrasion	83.000

SEALIFE / E

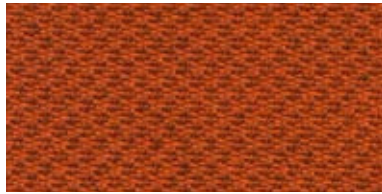
1506



3509



4566



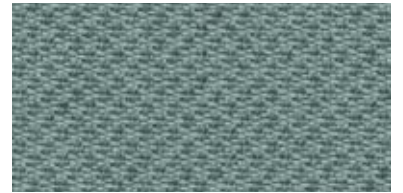
4037



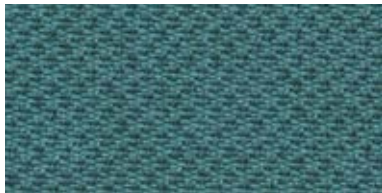
7029



8532



7504



6512



8517



4522



SEALIFE / E

TEKNİK DETAYLAR / TECHNICAL SHEET

TR

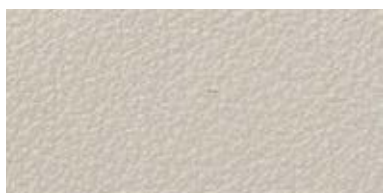
Kumaş Yapısı	%100 Geri Dönüştürülmüş Polyester SEAQUAL Sertifikalı
Genişlik	140 cm
Metre Başı Ağırlığı	460 g/ml - 330 g/m ²
Yanmaya Karşı Dayanıklılık	1 IM (UNI 9175) California TB 117 EN 1021-1&2
Solmaya Karşı Dayanıklılık	6 (ISO 105 - B02)
Aşınmaya Karşı Dayanıklılık	100.000

EN

Composition	100% Recycled Polyester SEAQUAL Certified
Width	140 cm
Weight per Meter	460 g/ml - 330 g/m ²
Fire Test	1 IM (UNI 9175) California TB 117 EN 1021-1&2
Lightfastness	6 (ISO 105 - B02)
Abrasion	100.000

LINEA / F

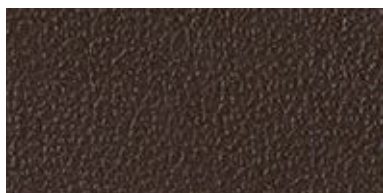
Latte
635



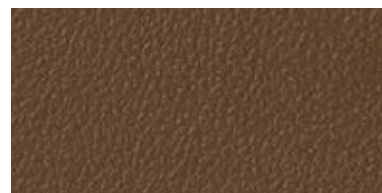
*Mastice
676



Coffee
682



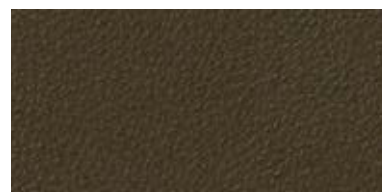
*Nocciola
607



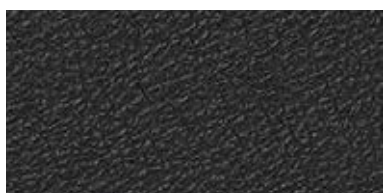
*Asfalto
660



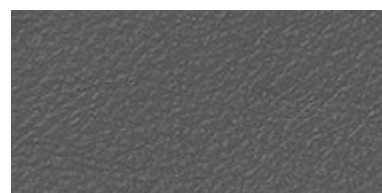
Verdone
632



*Nero
622



Highway
670



LINEA / F

TEKNİK DETAYLAR / TECHNICAL SHEET

TR

Kumaş Yapısı	%100 Deri
Genişlik	Boyut: 4.8-5.0 m ² Kalınlık: 0.9-1.1 mm
Metre Başı Ağırlığı	-
Yanmaya Karşı Dayanıklılık	BS 5852:1979 BS EN 1021-1-2:2006
Solmaya Karşı Dayanıklılık	5 (ISO 105-B02)
Aşınmaya Karşı Dayanıklılık	Kuru-500 tur Islak-250 tur Terleme-80 tur Esneklik dayanımı: Kuru-50.000 tur

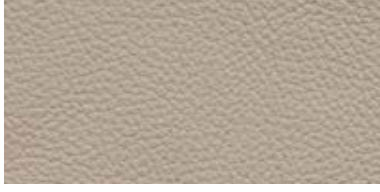
EN

Composition	100% Leather
Width	Size: 4.8-5.0 m ² Thickness: 0.9-1.1 mm
Weight per Meter Fire Test	- BS 5852:1979 BS EN 1021-1-2:2006
Lightfastness	5 (ISO 105-B02)
Abrasion	Dry-500 cycles Wet-250 cycles Sweat-80 cycles Flexing endurance: Dry-50.000 cycles

OPERA / PAD

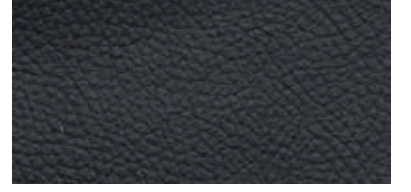
Sabbia

506



Nero

516



Choco

517



*Sümen derisi olarak kullanılır. / Used as pad leather.

OPERA / PAD

TEKNİK DETAYLAR / TECHNICAL SHEET

TR

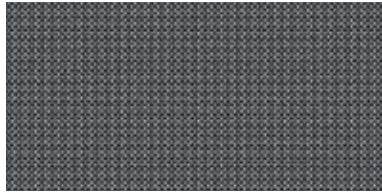
Kumaş Yapısı	%100 Deri
Genişlik	4,8-5 m2
Metre Başı Ağırlığı	-
Yanmaya Karşı Dayanıklılık	-
Solmaya Karşı Dayanıklılık	-
Aşınmaya Karşı Dayanıklılık	Kuru: 500c (UNI EN ISO 11640) Yaş: 250c (UNI EN ISO 11640) Terleme: 80c (UNI EN ISO 11640) Esneklik dayanımı: 50.000 (ISO 5402)

EN

Composition	100% Leather
Width	4,8-5 m2
Weight per Meter	-
Fire Test	-
Lightfastness	-
Abrasion	Dry: 500c (UNI EN ISO 11640) Wet: 250c (UNI EN ISO 11640) Sweat: 80c (UNI EN ISO 11640) Flexing Endurance: 50.000 (ISO 5402)

SERGE FERRARI / OUTDOOR

Dark Alu
7720FR-5706



Pebble
F4340-07445



Mist
F4340-20161



SERGE FERRARI / OUTDOOR

TEKNİK DETAYLAR / TECHNICAL SHEET

TR

Kumaş Yapısı	Suni Deri
Genişlik	140 cm
Metre Başı Ağırlığı	780 g/m ² ± %5 EN ISO 2286-2
Yanmaya Karşı Dayanıklılık	M2/NFP92.507 EN 1021.1-1021.2 IMO MSC.307 (88)(201 FTP Kodu) Annex 1 Bölüm 8 Hava Testi FAR/JAR 28-853/855
Solmaya Karşı Dayanıklılık	-
Aşınmaya Karşı Dayanıklılık	>120.000 EN ISO 12947 - 2

EN

Composition	Artificial Leather
Width	140 cm
Weight per Meter	780 g/m ² ± %5 EN ISO 2286-2
Fire Test	M2/NFP92.507 EN 1021.1-1021.2 IMO MSC.307 (88)(201 FTP Code Annex 1 Part 8 Aerial Test FAR/JAR 28-853/855
Lightfastness	-
Abrasion	>120.000 EN ISO 12947 - 2

PLAIN MELANGE / OUTDOOR

Beige

020



Light Blue

693



Grey

072



Dark Grey

833



Light Brown

018



Navy Blue

694



PLAIN MELANGE / OUTDOOR

TEKNİK DETAYLAR / TECHNICAL SHEET

TR

Kumaş Yapısı	%100 Çözelti Boyalı
Genişlik	Akrilik 137 cm
Metre Başı Ağırlığı	240 g/m ²
Yanmaya Karşı Dayanıklılık	-
Solmaya Karşı Dayanıklılık	-
Aşınmaya Karşı Dayanıklılık	15.000 ISO 12947 - 2

EN

Composition	100% Solution Dyed Acrylic
Width	137 cm
Weight per Meter	240 g/m ²
Fire Test	-
Lightfastness	-
Abrasion	15.000 ISO 12947 - 2

